

iRis *DVR* X

The innovative Videoscope











iRis DVR X

The innovative Videoscope

Future Camera Technology

Unique benefits and features

- 
5.0" / 12.7cm display
 The large integrated display (5.0" / 12.7cm) on the iRis DVR X videoscope system provides outstanding razor-sharp images.
- 
Advanced image sensor
 An advanced state of the art "chip on the tip" image sensor is the core element of the iRis DVR X and provides a high image quality.
- 
At least 6h operation time
 Rechargeable high-capacity battery extends uninterrupted operation time up to 6 hours (6mm version). This is 3 times longer compared to most other portable systems.
- 
4-way articulation
 Thanks to the non-motorized infinite joystick control, users can navigate the probe responsively with tactile feel and precise tip positioning.
- 
2.97lb / 1.35Kg
 The iRis DVR X is one of the lightest portable videoscopes on the market. Compact dimensions and the robust design are further outstanding features.
- 
360° ergonomic
 The iRis DVR X is the world's first portable videoscope with a 360° rotating.
- 
Short rigid distal end
 A very short rigid distal end enables extreme manoeuvres while guiding the probe through tight and small radius manoeuvrability.
- 
High Power LED
 The LEDs are integrated into the tip and are characterised by their superior high-intensity white light.















Please note: the product representation corresponds to the original product size (scale 1:1)

**Chip on the tip
LED on the tip**
(6mm Version)



Advanced benefits and features

- 
Digital video recording
 Records every single movement of a component, fully digitally, in brilliant video quality.
- 
Image capturing
 At the push of a button, high-res inspection images are captured and stored on SDHC memory card.
- 
3.5x zoom
 Thanks to the 3.5 times zoom, users won't miss any detail of the visual inspection.
- 
Adjustable light intensity
 3-stage adjustable LED prevents overexposure, suppresses image noise arising from readjustment of camera electronics.
- 
Measurement
 The iRis DVR X uses the comparative measurement method to determine the size of a damaged spot.
- 
Image annotation
 By means of the integrated text generator, information can be directly written on the inspection image.
- 
Up to 32GB storage
 Approx. 32,000 images or 500 hours of video recording fit onto a 32GB SDHC memory card.
- 
Camera control
 The iRis DVR X has different camera modes to provide well-balanced inspection images, even in extreme situations.
- 
QuickStart
 Switch on and start. It's that simple. No cables, no plugs, no long booting process, no warm-up phase.
- 
On-screen menu
 Even first time users are intuitively guided through the on-screen menu.
- 
Mains power supply
 The iRis DVR X can also be powered with an AC adapter connected to mains power.
- 
Robust and reliable
 Only high-grade materials are used in the iRis DVR X. The extremely pliable articulation section ensures precision in control and provides maximum articulation angles.
- 
SmartView
 The SmartView technology allows an external monitor or display to be connected to the iRis DVR X and enables viewing by a second person.

iRis DVR X

The innovative Videoscope

Operating unit

Display size:	5.0" (12.7cm) TFT colour
Display resolution:	VGA (640x480 pixel)
Operating system:	Real-time operating system, with on-screen menu
User interface:	Direct action keys / function keys / arrow keys
Languages:	English, German, Polish, French, Spanish, Italian, Turkish
Video interface:	Composite video-out (BNC)
Power supply, primary:	Rechargeable Li-ion battery (charger and battery are provided in delivery set)
Power supply, secondary:	12V adapter (optional asseccory)

Documentation

Video format:	AVI (.avi) (with time and date stamp)
Image format:	BMP (.bmp) (with time and date stamp)
Storage:	SDHC memory card up to 32GB (FAT32) (8GB is provided in delivery set)

Camera control

Image sensor:	Advanced chip on the tip image sensor
White balance:	Factory default or user defined

Image control

Zoom:	x 3.5
Invert:	Horizontal and vertical image inversion
Brightness:	Adjustable
Contrast:	Adjustable
Colour:	Adjustable
Text annotation:	Built-in full screen text overlay generator

Illumination

Type:	High-power LED (4mm fiber / 6mm - LED on the tip)
Illumination control:	3 steps
Colour temperature:	approx. 6500k
Average lamp lifetime:	approx. 5000h

Probe

Diameter:	4.0mm	6.0mm
Working length:	4.9 - 13.1ft (1.5 - 4.0m)	4.9 - 13.1ft (1.5 - 7.5m)
Articulation (bending neck):	4-way / 360° control	4-way / 360° control
Articulation angle* L/R U/D:	100°/100° 100°/100°	100°/100° 160°/130°
Integrated objective lens:	90° FOV	90°FOV
Braid:	Multi-layer tungsten braid on PU jacket	

Construction

Ergonomics:	± 90° rotatable display unit, alt. ±90° rotatable scope handle
System weight:	1,35Kg
Dimensions:	180mm x 105mm x 45mm
Housing:	Rugged PU, with integrated rubber shock caps
Protection class:	IP53

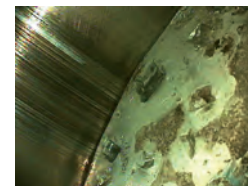
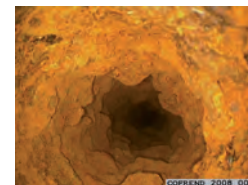
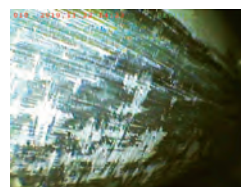
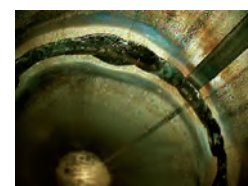
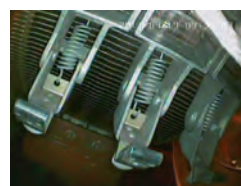
Operating environment

Tip operating temperature:	-13°F to 176°F (-25°C to +80°C)
System operating temperature:	-13°F to 115°F (-25°C to +46°C)
Storage temperature:	-13°F to 140°F (-25°C to +60°C)
Relative humidity:	95% max. - non condensing
Waterproof:	Probe and distal end up to 14.7 psi (1 bar- 10.2m H ₂ O)
Resistance:	Probe and distal end to oils and saline (5%)
Carrying Case	508mm x 373mm x 147mm / 4,5kg

Manufacturer's Data

Country of Origin	Germany
-------------------	---------

Inspection images



Sales Office & Warehouse:
 Rawa Bambu Satu
 Jl. A No. 22. Pasar Minggu
 Jakarta Selatan 12520
 INDONESIA
 Phone: +62 (021) 7815008 -
 7815046
 Fax: +62 (021) 7817757



IP53